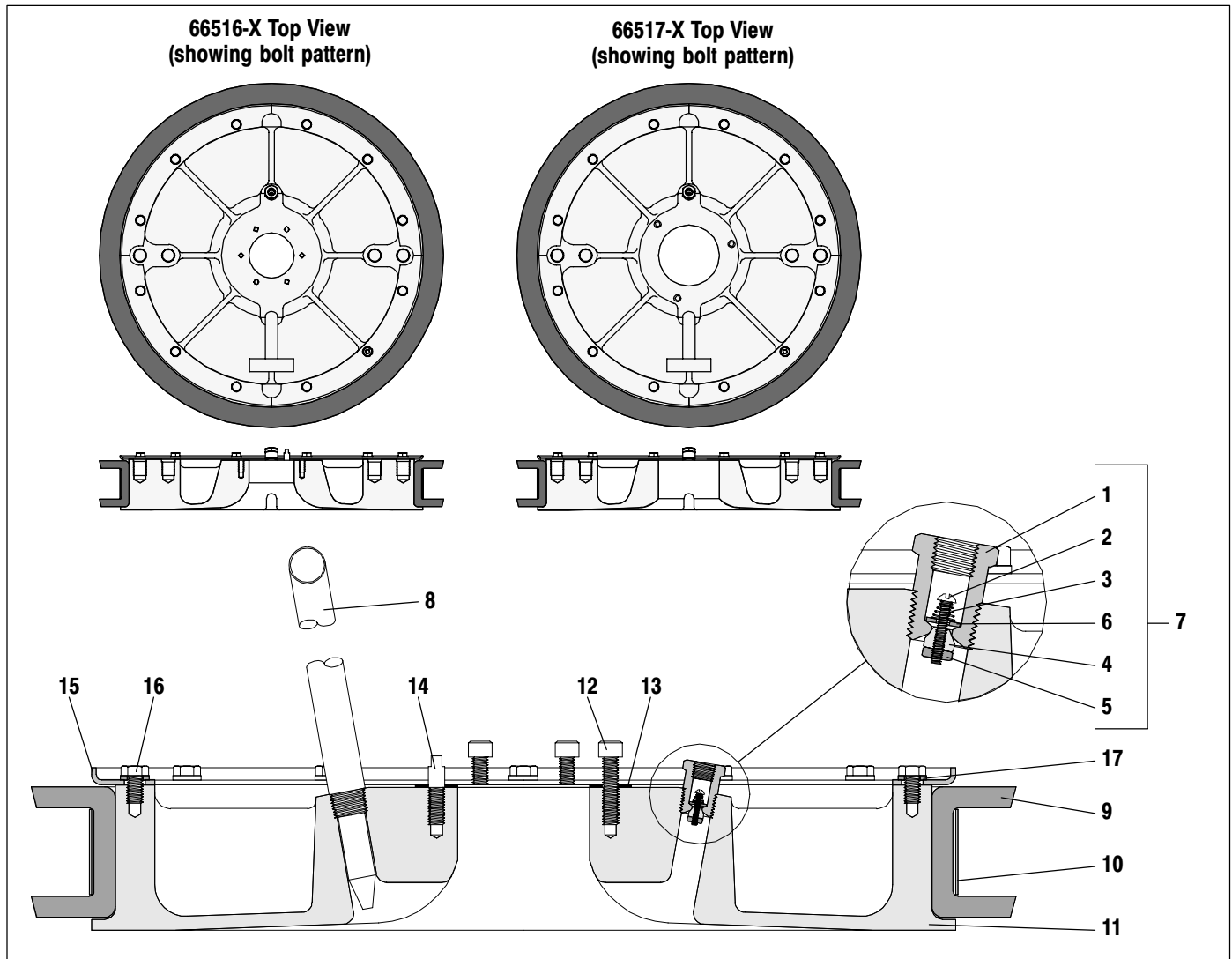


## 66516-( ) and 66517-( ) FOLLOWER ASSEMBLY

RELEASED: 4-7-00  
REVISED:  
(REV. )



ITEM	DESCRIPTION (Size in Inches)	QTY	PART NO.
1	Check Valve Body	(1)	90504
2	Machine Screw (#5 - 40 x 3/4")	(1)	Y8-359-N
3	Spring	(1)	31125
4	Valve Nut	(1)	90553
5	Nut (#5 - 40)	(1)	Y22-5-N
6	Spring Stop	(1)	90554
7	Check Valve Assembly	(1)	65769
8	Vent Plug Assembly	(1)	66045
9	Seal (models 6651X and 6651X-5) (Nitrile)	(1)	92334
	(models 6651X-1 and 6651X-6) (Polyurethane)	(1)	92122
	(models 6651X-2 and 6651X-7) (E.P.R.)	(1)	92132
10	Follower Band	(1)	92335

ITEM	DESCRIPTION (Size in Inches)	QTY	PART NO.
11	Follower Plate (models 66516, -1, -2)	(1)	92337
	(models 66516-5, -6, -7)	(1)	92337-1
	(models 66517, -1, -2)	(1)	92338
	(models 66517-5, -6, -7)	(1)	92338-1
12	Cap Screw (models 66516-X) (3/8" - 16 x 1-1/4")	(4)	Y99-63-C
	(models 66517-X) (1/2" - 13 x 1-1/2")	(3)	Y99-84-C
13	Gasket (models 66516-X)	(1)	90552
	(models 66517-X)	(1)	92339
14	Stud (models 66516-X only)	(2)	91263
15	Follower Section Ring	(4)	91034
16	Cap Screw (3/8" - 16 x 5/8")	(12)	Y6-62-C
17	Lock Washer (3/8")	(12)	Y14-616

PN 97999-854



INGERSOLL-RAND COMPANY  
P.O. BOX 151 • ONE ARO CENTER • BRYAN, OHIO 43506-0151  
☎ (419) 636-4242 • FAX (419) 633-1674

©2000 • PRINTED IN U.S.A.

**INGERSOLL-RAND**  
**FLUID PRODUCTS**